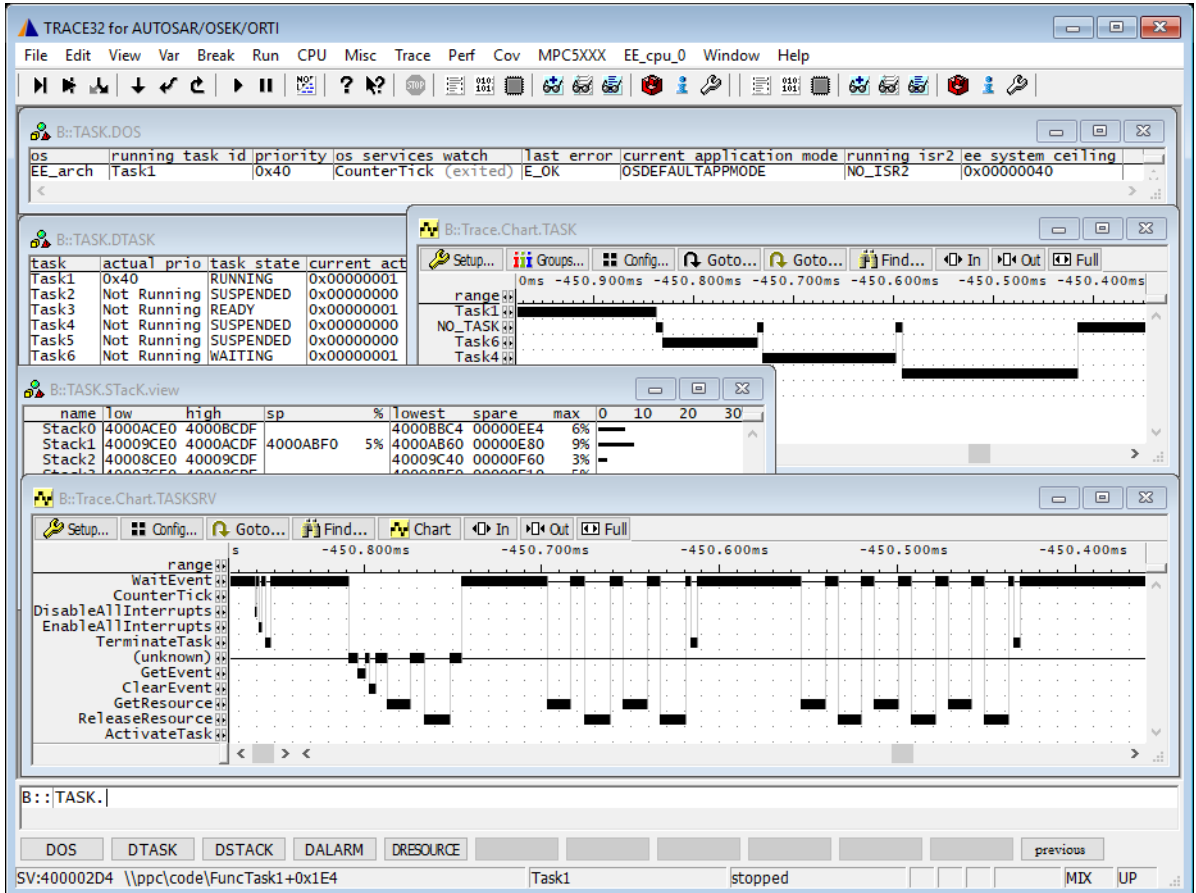


OS Awareness Manual OSEK/ORTI

Release 09.2025

Overview



The OSEK Run Time Interface (ORTI) is a specification, which enables debuggers to become OS-aware, without knowing the OS itself. Most AUTOSAR/OSEK system builders are able to extract all necessary information of the OS component into a text file, called "ORTI file".

The TRACE32 Debugger can load such an ORTI file and adds some special extensions to itself. This manual describes the additional features, such as additional commands and statistic evaluations.

Note that only those extensions are available, which are specified in the ORTI file. I.e. there may be only a subset of the described features available, depending on your ORTI file.

Architecture-independent information:

- **“Debugger Tutorial”** (debugger_tutorial.pdf): Get familiar with the basic features of a TRACE32 debugger.
- **“General Commands”** (general_ref_<x>.pdf): Alphabetic list of debug commands.
- **“OS Awareness Manuals”** (rtos_<os>.pdf): TRACE32 PowerView can be extended for operating system-aware debugging. The appropriate OS Awareness manual informs you how to enable the OS-aware debugging.

Architecture-specific information:

- **“Processor Architecture Manuals”**: These manuals describe commands that are specific for the processor architecture supported by your Debug Cable. To access the manual for your processor architecture, proceed as follows:
 - Choose **Help** menu > **Processor Architecture Manual**.

Supported Versions

Currently ORTI is supported for the following versions:

- ORTI V2.0 (no official version)
- ORTI V2.1, V2.2
- ORTI V2.3 (inofficial SMP and OTM extensions)

Configuration

The following command is used to load the ORTI file and to extend the capabilities of the debugger according to this file:

```
TASK.ORTI <orti_file>          Load ORTI file.
```

The AUTOSAR/OSEK system builder generates an ORTI file, when generating the OS (usually with the extension “.ort” or “.orti”). Specify this file to the **TASK.ORTI** command.

The ORTI file refers to global symbols exported by the OS. Ensure that those symbols are loaded and accessible while executing **TASK.ORTI** and while using the ORTI extensions. Usually the compiled application contains these symbols.

If you want to display the OS objects “On The Fly” while the target is running, you need to have access to memory while the target is running. Use **SYStem.MemAccess** to configure and enable the access. This memory access should be cache-coherent, if the CPU implements a cache. This consideration is particularly relevant for Cortex-A and Cortex-R devices, where memory access via the Debug Access Port (DAP) is typically not cache-coherent. For more details specific to your CPU, please refer to the description of the **SYStem.MemAccess** command in your [processor architecture manual](#).

See also the example “~/demo/kernel/orti/orti.cmm”.

Quick Configuration Guide

To get a quick access to the features of the ORTI debugger with your application, follow this roadmap:

1. Start the TRACE32 Debugger.
2. Load your application as normal.
3. Execute the command:

```
TASK.ORTI <orti_file>
```

See “[Configuration](#)”.

4. Start your application.

Now you can access the ORTI extensions through the TRACE32 menu.

In case of any problems, please carefully read the previous configuration chapters and check the [requirements](#).

Hooks and Internals in ORTI

There are some requirements to do a successful debugging and tracing with ORTI files. In case of problems, please check carefully these items.

Requirements for Debugging

Please note these requirements for debugging:

- The module to be debugged must be compiled and linked with debug information. If possible, compile the OS with debug information, too.
- It is recommended (but not mandatory) to switch off compiler optimization for easier debugging. But be aware that this affects the run time behavior.
- The AUTOSAR/OSEK system builder must create an ORTI file. This file is system specific - it must be rebuilt as soon as the application layout is changed.
- The “RUNNINGTASK” attribute of the “OS” object should evaluate to a single address location

OK: `RUNNINGTASK = "OS_taskCurrent";`

Not OK: `RUNNINGTASK = "OS_taskCurrent->runPrio";`

Single address is needed by the debugger to get the current running task by reading a single memory location. E.g. used to display the current task in the status line, provide task-specific breakpoints, calculate dynamic task performance, detect task switches in the real time trace, and various other things.

Contact the OS vendor or Lauterbach if this requirement is not met.

- The “RUNNINGTASK” attribute of the “OS” object should be declared as “ENUM”

OK: `ENUM ["NO_TASK" = 0xff, "InitTask" = 0, "Cyclic" = 1, "Loop" = 2]
RUNNINGTASK, "Running task";`

Not OK: `CTYPE RUNNINGTASK, "Running task";`

ENUM is used by the debugger to know all the possible tasks in the system.

Contact the OS vendor or Lauterbach if this requirement is not met.

Requirements for Tracing

Tracing with ORTI requires that the on-chip trace generation logic can generate task information. For details refer to “[OS-aware Tracing](#)” in TRACE32 Concepts, page 36 (trace32_concepts.pdf).

In case of tracing write accesses, the debugger uses the address of the variable given as “RUNNINGTASK” in the ORTI file. No hooks are necessary.

In case of tracing task switch packets, either the OS writes the current task ID into the ownership trace register, or a PreTaskHook must be created and registered to write the task ID.

Example for a PreTaskHook for PowerPCs with diab compiler:

```
asm volatile void send_OTM (TaskType value)
{
%reg value
!
    mtpid0 value
    isync
}

void PreTaskHook (void)
{
    TaskType taskid;
    GetTaskID(&taskid);
    send_OTM(taskid);
}
```

For recording various objects (tasks, ISRs, services) and/or ids that do not fit in a single ownership trace message, use a complex OTM protocol. Ask Lauterbach for the specification of the “ORTI OTM Proposal”.

AUTOSAR also provides an advanced hook based tracing scenario, called ARTI (AUTOSAR Run-Time Interface). Using this instrumented trace, various OS and RTE events can be traced and evaluated. In case you want to use ARTI instead of the above mentioned tracing methods, contact Lauterbach for support.

Debug Features

The OS Awareness for OSEK/ORTI supports the following debug features.

Display of Kernel Resources

The ORTI awareness defines new PRACTICE commands to display various kernel resources. The Information available depends on the objects defined in the ORTI file. The commands for displaying those information has the form "TASK.D<object>". For a detailed description please refer to the chapter "[ORTI Commands](#)".

If your hardware allows memory access while the target is running, these resources can be displayed "On The Fly", i.e. while the application is running, without any intrusion to the application.

Without this capability, the information will only be displayed if the target application is stopped.

Task Stack Coverage

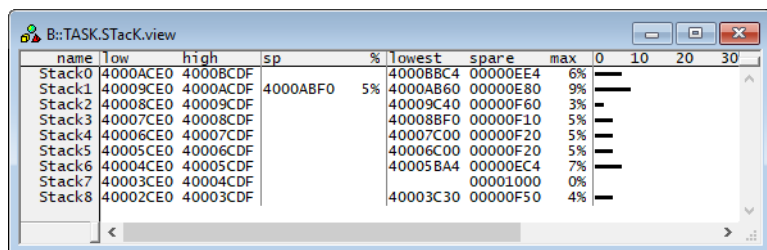
For stack usage coverage of OSEK stacks, you can use the [TASK.STack](#) command. This command will set up a window with all defined OSEK stacks.

This feature is only available, if the ORTI file presents the stack characteristics of each task as defined in the ORTI specification.

The debugger uses the stack pattern given in the ORTI file to calculate the maximum stack usage of each task. If the ORTI file does not provide a stack pattern, it must be defined with the command [TASK.STack.PATtern](#) (default value is zero).

To add/remove one stack to/from the stack coverage, you can call the [TASK.STack.ADD](#) resp. [TASK.STack.ReMove](#) commands and select from the list window.

It is recommended to display only the stacks you are interested in, because the evaluation of the used stack space is very time consuming and slows down the debugger display.



name	low	high	sp	%	lowest	spare	max	0	10	20	30
Stack0	4000ACE0	4000BCDF			4000BBC4	0000EE4	6%				
Stack1	40009CE0	4000ACDF	4000ABF0	5%	4000AB60	0000E80	9%				
Stack2	40008CE0	40009CDF			40009C40	0000F60	3%				
Stack3	40007CE0	40008CDF			40008BF0	0000F10	5%				
Stack4	40006CE0	40007CDF			40007C00	0000F20	5%				
Stack5	40005CE0	40006CDF			40006C00	0000F20	5%				
Stack6	40004CE0	40005CDF			40005BA4	0000EC4	7%				
Stack7	40003CE0	40004CDF				00001000	0%				
Stack8	40002CE0	40003CDF			40003C30	0000F50	4%				

Task-Related Breakpoints

Any breakpoint set in the debugger can be restricted to fire only if a specific task hits that breakpoint. This is especially useful when debugging code which is shared between several tasks. To set a task-related breakpoint, use the command:

Break.Set <address><range> [/<option>] /TASK <task> Set task-related breakpoint.

- Use a magic number, task ID, or task name for <task>. For information about the parameters, see “[What to know about the Task Parameters](#)” (general_ref_t.pdf).
- For a general description of the **Break.Set** command, please see its documentation.

By default, the task-related breakpoint will be implemented by a conditional breakpoint inside the debugger. This means that the target will *always* halt at that breakpoint, but the debugger immediately resumes execution if the current running task is not equal to the specified task.

NOTE: Task-related breakpoints impact the real-time behavior of the application.

On some architectures, however, it is possible to set a task-related breakpoint with *on-chip* debug logic that is less intrusive. To do this, include the option /Onchip in the **Break.Set** command. The debugger then uses the on-chip resources to reduce the number of breaks to the minimum by pre-filtering the tasks.

For example, on ARM architectures: *If* the RTOS serves the Context ID register at task switches, and *if* the debug logic provides the Context ID comparison, you may use Context ID register for less intrusive task-related breakpoints:

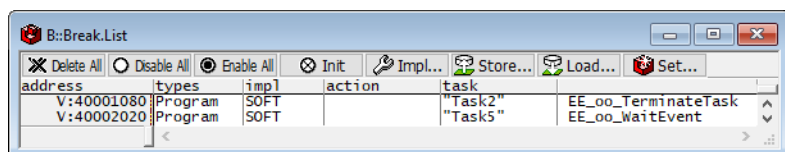
Break.CONFIG.UseContextID ON Enables the comparison to the whole Context ID register.

Break.CONFIG.MatchASID ON Enables the comparison to the ASID part only.

TASK.List.tasks If **TASK.List.tasks** provides a trace ID (**traceid** column), the debugger will use this ID for comparison. Without the trace ID, it uses the magic number (**magic** column) for comparison.

When single stepping, the debugger halts at the next instruction, regardless of which task hits this breakpoint. When debugging shared code, stepping over an OS function may cause a task switch and coming back to the same place - but with a different task. If you want to restrict debugging to the current task, you can set up the debugger with **SETUP.StepWithinTask ON** to use task-related breakpoints for single stepping. In this case, single stepping will always stay within the current task. Other tasks using the same code will not be halted on these breakpoints.

If you want to halt program execution as soon as a specific task is scheduled to run by the OS, you can use the **Break.SetTask** command.



Task Context Display

You can switch the whole viewing context to a task that is currently not being executed. This means that all register and stack-related information displayed, e.g. in **Register**, **List.auto**, **Frame** etc. windows, will refer to this task. Be aware that this is only for displaying information. When you continue debugging the application (**Step** or **Go**), the debugger will switch back to the current context.

To display a specific task context, use the command:

Frame.TASK [*<task>*] Display task context.

- Use a magic number, task ID, or task name for *<task>*. For information about the parameters, see **“What to know about the Task Parameters”** (general_ref_t.pdf).
- To switch back to the current context, omit all parameters.

To display the call stack of a specific task, use the following command:

Frame /Task *<task>* Display call stack of a task.

If you'd like to see the application code where the task was preempted, then take these steps:

1. Open the **Frame /Caller /Task** *<task>* window.
2. Double-click the line showing the OS service call.

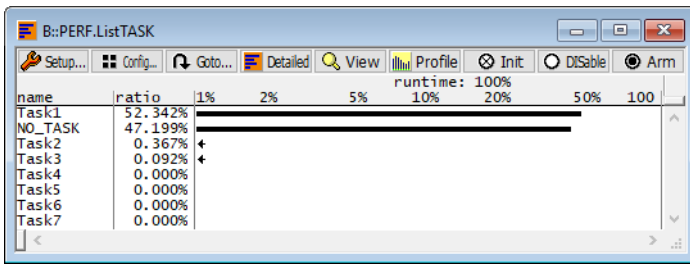
NOTE: The evaluation of the task context is only available, if the loaded ORTI file provides information about the contexts.

Dynamic Task Performance Measurement

The debugger can execute a dynamic performance measurement by evaluating the current running task in changing time intervals. Start the measurement with the commands **PERF.Mode TASK** and **PERF.Arm**, and view the contents with **PERF.ListTASK**. The evaluation is done by reading the 'magic' location (= current running task) in memory. This memory read may be non-intrusive or intrusive, depending on the **PERF.METHOD** used.

If **PERF** collects the PC for function profiling of processes in MMU-based operating systems (**SYStem.Option.MMUSPACES ON**), then you need to set **PERF.CONFIG.MMUSPACES**, too.

For a general description of the **PERF** command group, refer to **“General Commands Reference Guide P”** (general_ref_p.pdf).



OSEK/ORTI specific Menu

When loading the ORTI file with the command **TASK.ORTI**, the debugger automatically extends the menus, depending on the contents of the ORTI file.

You will find a new menu, named to the OSEK OS name.

- The **Display** menu items launch the kernel resource display windows.
- The **Stack Coverage** submenu (if available) starts and resets the OSEK stack coverage and provides an easy way to add or remove stacks from the stack coverage window.

In addition, these menus on the TRACE32 [main menu bar](#) are modified:

- The **Trace, List** menu is extended.
 - “Task Switches” shows a trace list window with only task switches (if any)
 - “Default and Tasks” shows switches together with the default display.
- The **Perf** menu contains additional submenus
 - “Task Runtime” enables and shows the [task runtime analysis](#)
 - “Task Function Runtime” enables and shows the [function runtime statistics](#) based on tasks
 - “Task State” enables shows the [task state analysis](#)
 - “CPU Load” enables and shows the [CPU load analysis](#)

Trace Features

All features in this chapter are based on the ORTI-file related tracing methods. See the tracing requirements in the chapter “[Hooks & Internals](#)”. This method uses program flow trace and data trace, with possibly a small instrumentation for tracing task switches. For details refer to “[OS-aware Tracing](#)” in TRACE32 Concepts, page 36 (trace32_concepts.pdf).

If you're using the AUTOSAR ARTI module and hooks, the setup and configuration for tracing differs. ARTI uses a trace that is completely built upon hook instrumentation. The actual used tracing mechanism depends on the instrumentation and the used CPU. The features are basically the same, but there are some subtle differences. Contact Lauterbach for support.

The OS Awareness for OSEK/ORTI supports the following trace features.

Task Runtime Statistics

NOTE:	This feature is <i>only</i> available, if your debug environment is able to trace task switches (program flow trace is not sufficient). It requires either an on-chip trace logic that is able to generate task information (eg. data trace), or a software instrumentation feeding one of TRACE32 software based traces (e.g. FDX or LOGGER). For details, refer to “ OS-aware Tracing ” in TRACE32 Concepts, page 36 (trace32_concepts.pdf).
--------------	---

Based on the recordings made by the [Trace](#) (if available), the debugger is able to evaluate the time spent in a task and display it statistically and graphically.

To evaluate the contents of the trace buffer, use these commands:

Trace.List List.TASK DEFault	Display trace buffer and task switches
Trace.STATistic.TASK	Display task runtime statistic evaluation
Trace.Chart.TASK	Display task runtime timechart
Trace.PROfileSTATistic.TASK	Display task runtime within fixed time intervals statistically
Trace.PROfileChart.TASK	Display task runtime within fixed time intervals as colored graph
Trace.FindAll Address TASK.CONFIG(magic)	Display all data access records to the “magic” location
Trace.FindAll CYcle owner OR CYcle context	Display all context ID records

The start of the recording time, when the calculation doesn't know which task is running, is calculated as “(unknown)”.

For further requirements for tracing, see also “[Hooks & Internals](#)”.

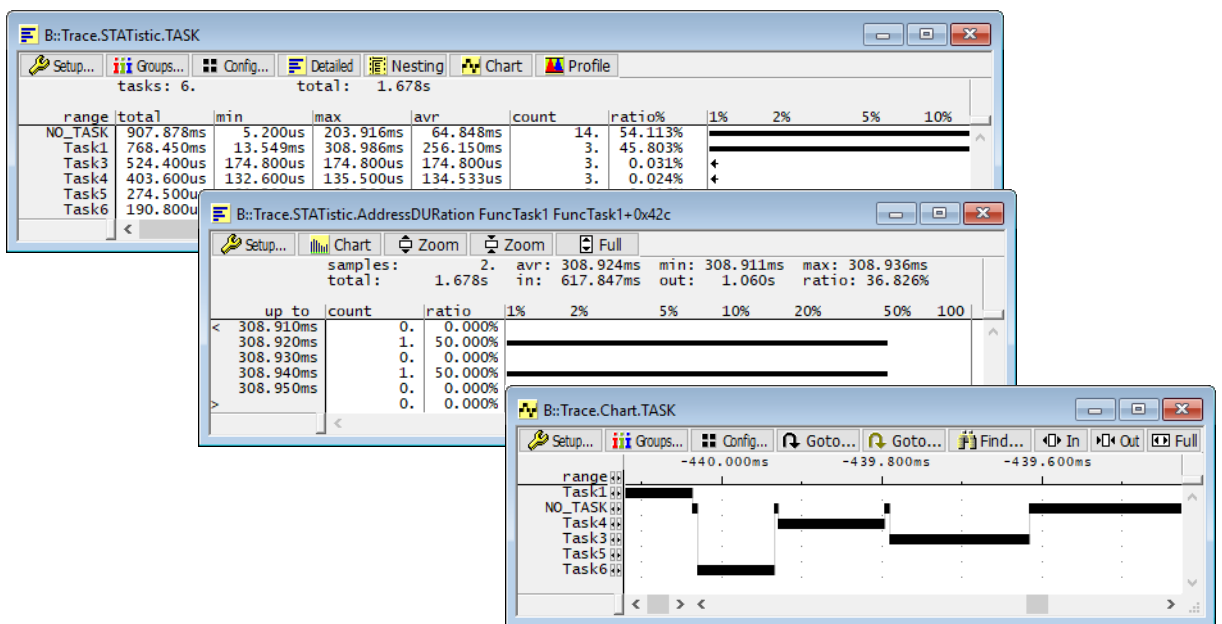
Hints on evaluating the function run times:

To display the time periods of calling timed tasks or timed runnables, use the body function of the tasks or runnables with `Trace.STATistic.AddressDIstance`. E.g:

```
Trace.STATistic.AddressDistance Func_Task10ms
```

To display the gross runtimes of a function, use `Trace.STATistic.AddressDURATION` with the start and exit address of the function. Please note that `sYMBOL.EXIT()` won't work for task body functions that end with `TerminateTask()`, as this function may be called by other tasks in between. Instead, set the second argument to the calling line of `TerminateTask()`. Also, the evaluation of recursive functions are not possible with this command. Examples:

```
Trace.STATistic.AddressDURATION myRunnable sYMBOL.EXIT(myRunnable)
Trace.STATistic.AddressDURATION myTaskFunc myTaskFunc\15
```



Task State Analysis

NOTE: This feature is **only** available, if your debugger equipment is able to trace memory data accesses (flow trace is not sufficient).

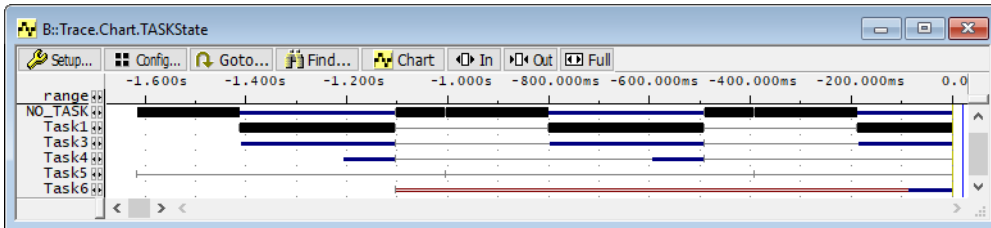
The time different tasks are in a certain state (running, ready, suspended or waiting) can be evaluated statistically or displayed graphically. This feature is implemented by evaluating all accesses to the status words of all tasks. Additionally the accesses to the current task pointer (=magic) are evaluated.

A complete recording of all data accesses is necessary for this feature.

To evaluate the contents of the trace buffer, use these commands:

Trace.STATistic.TASKState	Display task state statistic
Trace.Chart.TASKState	Display task state time chart

All kernel activities up to the task switch are added to the calling task. The start of the recording time, when the calculation doesn't know, which task is running, is calculated as "(root)".



Service Runtime Statistics

The time spent in an OSEK service routine can be evaluated statistically and displayed graphically. To do this, a memory location, that marks service routine entries and exits, must be recorded (that means, recording all services).

To do a selective recording on OSEK service routines with flow traces based on the data accesses, use the following PRACTICE command:

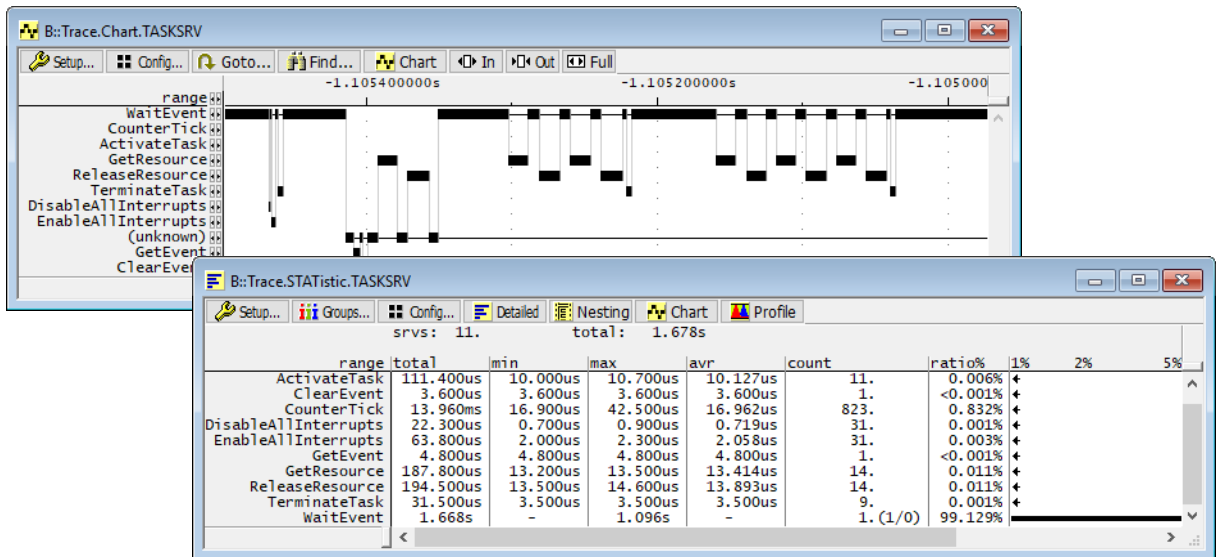
```
; Enable tracing only on the magic location  
Break.Set TASK.CONFIG(magic_service) /TraceEnable
```

To evaluate the contents of the trace buffer, use these commands:

Trace.List List.TASK	Display service nesting
Trace.STATistic.TASKSRV	Display service runtime statistic
Trace.Chart.TASKSRV	Display service time chart
Trace.PROfileSTATistic.TASKSRV	Display service runtime within fixed time intervals statistically
Trace.PROfileChart.TASKSRV	Display service runtime within fixed time intervals as colored graph

The start of the recording time, when the calculation doesn't know, which task/service is running, is calculated as "(root)".

For further requirements for tracing, see also [“Hooks & Internals”](#).



ISR2 Runtime Statistics

The time spent in an OSEK interrupt service routine (ISR2) can be evaluated statistically and displayed graphically. To do this, a memory location, that marks ISR2 routine entries and exits, must be recorded (that means, recording all interrupt service routines).

To do a selective recording on OSEK interrupt service routines with flow traces based on the data accesses, use the following PRACTICE command:

```

; Enable tracing only on the magic location
Break.Set TASK.CONFIG(magic_isr2) /TraceEnable

```

To evaluate the contents of the trace buffer, use these commands:

Trace.List List.TASK	Display ISR2 entries and exits
Trace.STATistic.TASKINTR	Display ISR2 runtime statistic
Trace.Chart.TASKINTR	Display ISR2 time chart
Trace.PROfileSTATistic.TASKINTR	Display ISR2 runtime within fixed time intervals statistically
Trace.PROfileChart.TASKINTR	Display ISR2 runtime within fixed time intervals as colored graph
Trace.STATistic.TASKVSINTR	Display ISR2 runtime statistics against task runtimes

The start of the recording time, when the calculation doesn't know, which task/service is running, is calculated as "(root)".

For further requirements for tracing, see also "[Hooks & Internals](#)".

Function Runtime Statistics

NOTE: This feature is *only* available, if your debug environment is able to trace task switches (program flow trace is not sufficient). It requires either an on-chip trace logic that is able to generate task information (eg. data trace), or a software instrumentation feeding one of TRACE32 software based traces (e.g. [FDX](#) or [LOGGER](#)). For details, refer to "[OS-aware Tracing](#)" in TRACE32 Concepts, page 36 (trace32_concepts.pdf).

All function-related statistic and time chart evaluations can be used with task-specific information. The function timings will be calculated dependent on the task that called this function. To do this, in addition to the function entries and exits, the task switches must be recorded.

To do a selective recording on task-related function runtimes based on the data accesses, use the following command:

```
; Enable flow trace and accesses to the magic location  
Break.Set TASK.CONFIG(magic) /TraceData
```

To do a selective recording on task-related function runtimes, based on the Arm Context ID, use the following command:

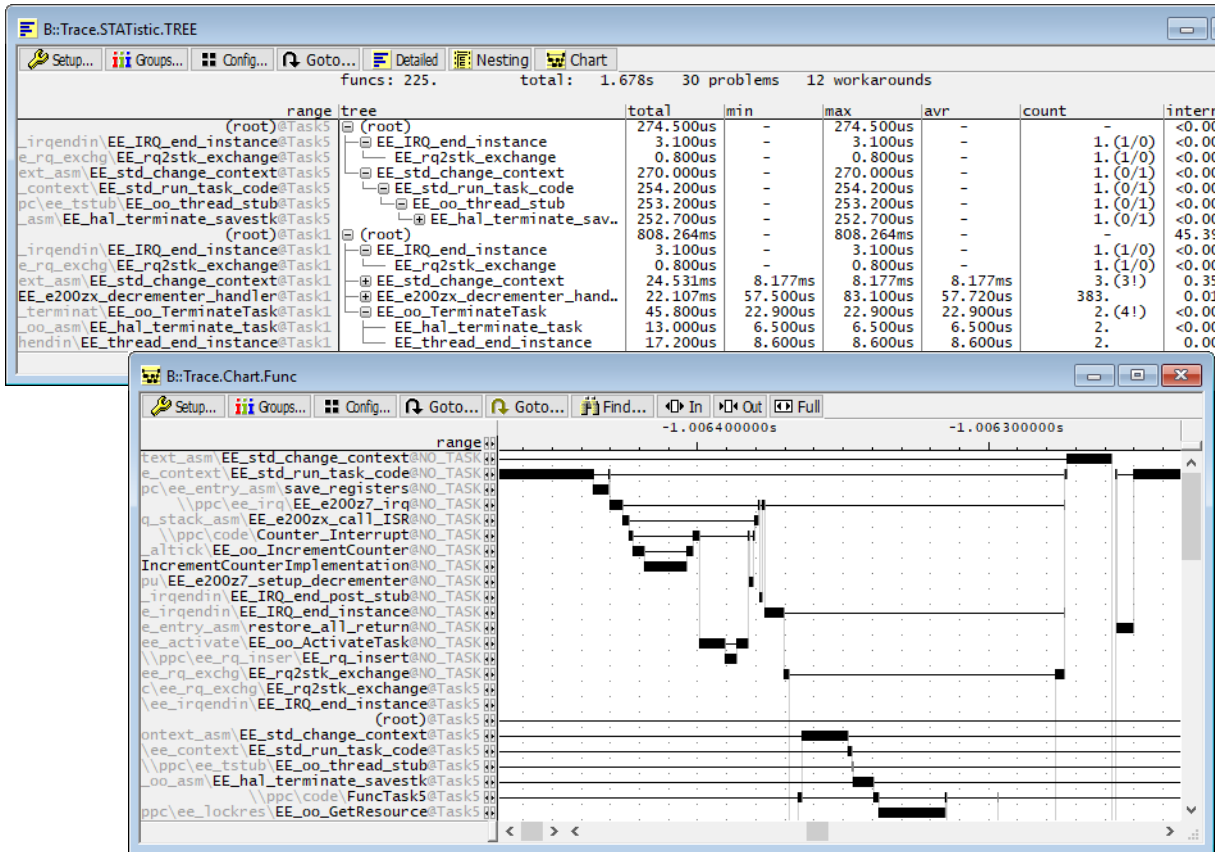
```
; Enable flow trace with Arm Context ID (e.g. 32bit)  
ETM.ContextID 32
```

To evaluate the contents of the trace buffer, use these commands:

Trace.ListNesting	Display function nesting
Trace.STATistic.Func	Display function runtime statistic
Trace.STATistic.TREE	Display functions as call tree
Trace.STATistic.sYmbol /SplitTASK	Display flat runtime analysis
Trace.Chart.Func	Display function timechart
Trace.Chart.sYmbol /SplitTASK	Display flat runtime timechart

The start of the recording time, when the calculation doesn't know which task is running, is calculated as "(unknown)".

For further requirements for tracing, see also [“Hooks & Internals”](#).



CPU Load Analysis

NOTE: This feature is *only* available, if your debug environment is able to trace task switches (program flow trace is not sufficient). It requires either an on-chip trace logic that is able to generate task information (eg. data trace), or a software instrumentation feeding one of TRACE32 software based traces (e.g. [FDX](#) or [LOGGER](#)). For details, refer to [“OS-aware Tracing”](#) in TRACE32 Concepts, page 36 (trace32_concepts.pdf).

Based on the recordings made by the [Trace](#) (if available), the debugger is able to evaluate the CPU load. The CPU load is calculated by comparing the time spent in all tasks against the time spent in the idle task. The measurement is done by using the [GROUP](#) command to group all idle tasks and calculating the time spent in all other tasks.

Example: Two idle tasks named "IdleTask1" and "IdleTask2":

```
; Create a group called "idle" with the idle tasks
GROUP.CreateTASK "idle" "IdleTask1"
GROUP.CreateTASK "idle" "IdleTask2"

; Unmark "idle" and mark all others in red
GROUP.COLOR "idle" NONE
GROUP.COLOR "other" RED

; Merge idle tasks and other tasks
GROUP.MERGE "idle"
GROUP.MERGE "other"
```

To evaluate the contents of the trace buffer, use these commands:

Trace.STATistic.TASK	Display CPU load statistic evaluation
Trace.PROfileChart.TASK	Display CPU load as colored graph

The start of the recording time, when the calculation doesn't know which task is running, is calculated as "(unknown)".

When CPU load analysis is no longer needed, or if a detailed **Task Runtime Statistic** is needed, disable the grouping of the tasks with:

```
; comments
GROUP.SEParate "idle"
GROUP.SEParate "other"
```

TASK.D<object>

Display OSEK objects

Format: **TASK.D<object>** [*<option>*]

<option>: **SMP**

Each object type, defined in the ORTI file, gets its own command to display those objects.

<object> Extend the command with the object type name.

SMP If the ORTI file defines an SMP OS, and if the object contains core specific attributes, the object will be displayed separately for each core. Without this option, the object will be displayed only for the current core.

Usually ORTI defines, among others, an “OS” object type and a “TASK” object type. Display the OS information and the task table, using the commands:

```
TASK.DOS  
TASK.DTASK
```

Some of the table entries may contain links. Double click on them to follow them.

os	running task	priority	os services watch	last error	current application	running_isr2
EE_arch	Task1	0x40	CounterTick (exit	E_OS_STATE	OSDEFAULTAPPMODE	NO_ISR2

task	actual prio	task state	task stack	current activations
Task1	0x40	RUNNING	Stack1	0x00000001
Task2	Not Running	SUSPENDED	Stack2	0x00000000
Task3	Not Running	READY	Stack3	0x00000001
Task4	Not Running	SUSPENDED	Stack4	0x00000000
Task5	Not Running	SUSPENDED	Stack5	0x00000000
Task6	Not Running	READY	Stack6	0x00000001
Task7	Not Running	SUSPENDED	Stack7	0x00000000

There are special definitions for OSEK/ORTI specific PRACTICE functions.

TASK.CONFIG()

OS Awareness configuration information

Syntax 1: **TASK.CONFIG(<keyword>)**
 (Single core instance)

Syntax 2: **TASK.CONFIG(<keyword>[<logical_core>])**

Syntax 3: **TASK.CONFIG(<keyword>:<logical_core>)**

<keyword>: **magic | magicsize | magic_service | magic_isr2**

<logical_core>: **0...n**

Returns information about the OS Awareness configuration depending on the <keywords> described below.

Parameter and Description:

magic	Parameter Type: String (<i>without</i> quotation marks). Returns the magic address, which is the location that contains the currently running task (i.e. its task magic number).
magicsize	Parameter Type: String (<i>without</i> quotation marks). Returns the size of the task magic number (1, 2 or 4).
magic_service	Parameter Type: String (<i>without</i> quotation marks). Returns the address of the service trace variable.
magic_isr2	Parameter Type: String (<i>without</i> quotation marks). Returns the address of the isr2 trace variable.
<logical_core>	Parameter Type: <ul style="list-style-type: none">• Decimal (<i>without</i> the trailing dot in this particular case) or• Hex value (the preceding 0x is mandatory in this particular case) <p>In SMP systems, each of these keywords can have an optional core number (starting with zero) in square brackets ([]), or separated by a colon (:). See examples below.</p>

Return Value Type: [Hex value](#).

Example 1: This script returns the address of the variable that holds the current task in a single core instance.

```
PRINT TASK.CONFIG(magic)
```

Example 2: These script lines show how to return the address of the variable that holds the current task of the 2nd, 13th, and 19th core.

```
;parameter type decimal:  
;omit the trailing dot in this particular case  
PRINT TASK.CONFIG(magic[1])      ;2nd logical core  
PRINT TASK.CONFIG(magic[12])     ;13th logical core  
  
// or  
  
PRINT TASK.CONFIG(magic:1)       ;2nd logical core  
PRINT TASK.CONFIG(magic:12)     ;13th logical core
```

```
;parameter type hex:  
;you must prefix the value with 0x in this particular case  
PRINT TASK.CONFIG(magic[0x1])    ;2nd logical core  
PRINT TASK.CONFIG(magic[0x12])   ;19th logical core  
  
// or  
  
PRINT TASK.CONFIG(magic:0x1)     ;2nd logical core  
PRINT TASK.CONFIG(magic:0x12)   ;19th logical core
```

TASK.ORTI.ADDRESS()

Address of ORTI attribute

Syntax: **TASK.ORTI.ADDRESS (<object>.<attribute>)**

Returns the address of the specified ORTI attribute.

Parameter Type: [String](#).

Return Value Type: [Address](#).

Example:

```
PRINT TASK.ORTI.ADDRESS(OS.RUNNINGTASK)
```

TASK.ORTI.RANGE()

Address range of ORTI attributes

Syntax: **TASK.ORTI.RANGE(<object>.<attribute>[{|<object>.<attribute>}])**

Returns the address range occupied by the ORTI attributes. You can specify more than one attribute by concatenating them with a pipe “|” character (see example 2 below).

Parameter Type: [String](#).

Return Value Type: [Address range](#).

Example 1:

```
PRINT TASK.ORTI.RANGE(TASK.STATE)
```

Example 2:

```
PRINT TASK.ORTI.RANGE(TASK.STATE | OS.RUNNINGTASK)
```