

PowerIntegrator - Logic and Bus Analyzer

- Timing Analyzer with 500 MHz on all Channels
- State Analyzer up to 200 MHz DDR
- 204 Input Channels
- Transient Recording
- Time Correlation with other Tracetools
- Clock Qualifier for State Clock
- Mixed State and Timing Mode
- 4 Clock Inputs
- MICTOR and Standard Probes (single ended)
- MICTOR differential Probes
- Analog Voltage and Current Probe
- 3G/DigRF Protocol Support

The PowerIntegrator module replaces much more expensive logic analyzer systems used for microprocessor system integration. High-speed logic analysis is now possible on every workplace integrated in the debugger software.

Features



Logic Analyzer

Basics

The PowerIntegrator Logic Analyzer is specially designed for microprocessor system integrations. The modul supports timing and state analysis up to 500 MHz.

Fast Upload

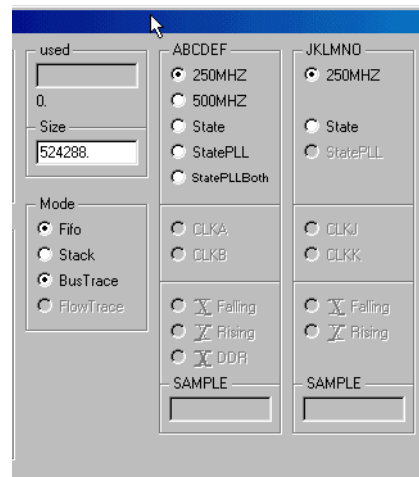
- ❑ 500 KBytes/sec

Time Stamp Unit with 4ns Resolution

Time Correlation with all other Clocks and Analyzers of the System

Master-Slave Operation in Conjunction with other Analyzers

Timing Analyzer



- 102 channels timing mode 500 MHz 1024K Records
- 204 channels timing mode 250 MHz 512K Transients

Transient Recording over required Time

High Memory Depth

- 256K low speed timing transients or state edges

Transient sensitivity can be activated independently for each channel

Input Channels

2 timing operating modes:

State Analyzer

Input Channels

4 state operating modes:

- 204 channels state mode 200 MHz 512K Trace (clock A or B)
- 102 channels state mode 200 MHz 512K Trace (clock A or B) Double Data Rate
- 102 channels state mode 200 MHz 512K Trace (clock A or B) and
- 102 channels state mode 200 MHz 512K Trace (clock J or K)
- sampling on rising or falling clock edge,

Direct Integration in Debug-

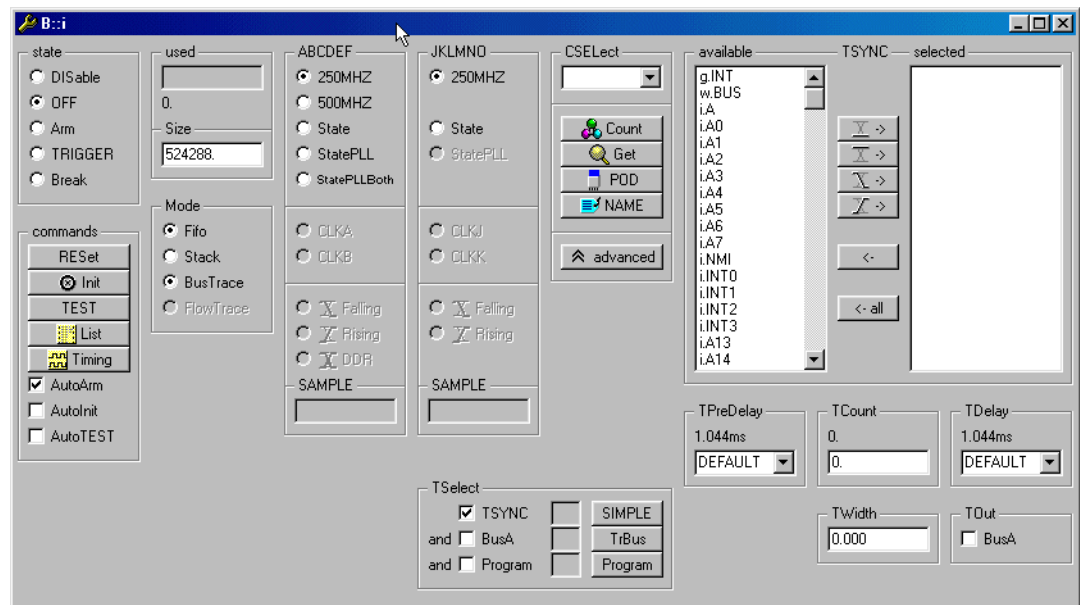
Trigger

ger Software

Complex Bus Oriented Triggering

Support Packages for Evaluation Boards

- Motorola
- ARM (ARM7, ARM9)
- XSCALE
- Altera
- MIPS
- SuperH



Simple Trigger

- 1 Complex comparator with HIGH, LOW, RISING, FALLING

or DON'T CARE for each input

- More than one clock edges can be selected for trigger condition

- Direct setting in timing display window

Complex Trigger

- Free programmable trigger sequencer with 4 levels

Trigger Events

- 2 Trigger comparators with 64 Bit each on every trigger level with HIGH, LOW, DON'T CARE and RANGE
- 8 Address Selectors with 32-Bit Range

4 Trigger Levels

- 4 global event, no death time

Trigger Filter

- Up to 2.5 us

3 Retriggerable 44 Bit Counters in Trigger System

- Time window definition

Formats

Various storage formats

- Binary

Trigger Output for Scope etc.

Triggering through Bus Trigger Lines

Programmable Trigger and Pretrigger Delay 0 to 1000% of Records

Triggering of other System Units

Trigger Output for Scope etc.

Trigger Input

- BUS
- External
- Trigger mode
 - High
 - Low
 - Rising
 - Falling

- VHDL
- Verilog

Protocol Support

Protocol Analysis

- CAN Support
- USB Support

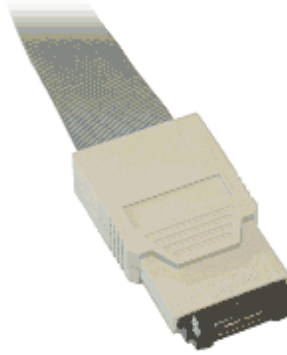
- I2C Support
- JTAG Support
- ASYNC Support
- User Specific Protocols

Disassembler Support

- Many disassemblers can be selected for bus trace operations

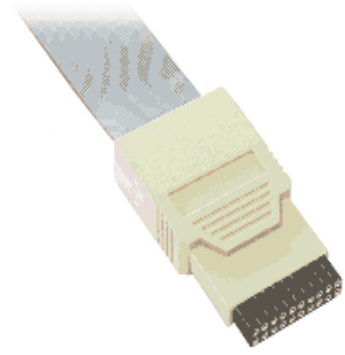
Probes

MICTOR Probe



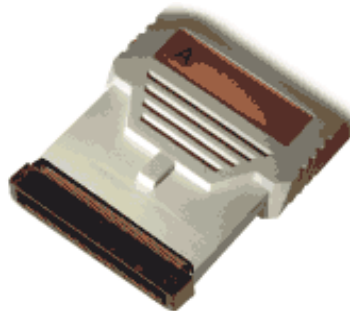
- 34 channel MICTOR probe (32 Data, 2 Clocks)
- Selectable threshold level for groups of 17 lines (16 Data, 1 Clock)
- 0.1..5.0 V
- 50 KOhm/4 pF 0.5 V with probe compensation

Standard Probe

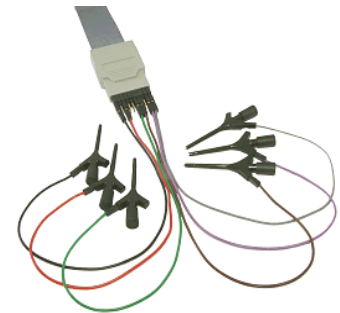


- 17 channels Selectable threshold level (16 Data, 1 Clock)
- 0.1..5.0 V
- 50 KOhm/4 pF 0.5 V with probe compensation

SAMTEC Probe



- 34 channel SAMTEC probe (32 Data, 2 Clocks)
- Selectable threshold level for groups of 17 lines (16 Data, 1 Clock)
- 0.1..5.0 V
- 50 KOhm/4 pF 0.5 V with probe compensation



Analog Probe

- 4 Voltage Channels 12 bit 0.5 V, 1 MOhm
- 3 Current Channels 5% Accuracy, external Shunt
- 625 k/sec Sample Rate

DRAM Adapter

- 184 Pin DIMM

Order Information

Module Description

OrderNo Code	Text
LA-7940 PI- LOGICANALYZ ER	PowerIntegrator Logic Analyzer ICD State-Timing Analyzer, 204 Channels, 200(400) MHz State, 500 MHz Timing, Transient Recording, 8 MB sample memory, 512 KFrames, 48 Bit Time-Stamp, Trigger Filter, Trigger Delay, etc. Requires PODBUS-Interface Requires a valid software maintenance of the debug system it is connected to
LA-3940 PI2- LOGICANALYZ ER-1G	PowerIntegrator II Logic Analyzer 1 GByte State-Timing Analyzer, 102 channels, 200 (400) MHz state, 500 MHz timing, transient recording, 64 MFrames, 48-bit time-stamp, trigger, filter, trigger Delay, etc. Requires Power Debug II Ethernet (LA-7699) Requires a valid software maintenance for the debug system it is connected to
LA-3941 PI2- LOGICANALYZ ER-2G	PowerIntegrator II Logic Analyzer 2 GByte State-Timing Analyzer, 102 channels, 200 (400) MHz state, 500 MHz timing, transient recording, 128 MFrames, 48-bit time-stamp, trigger, filter, trigger Delay, etc. Requires Power Debug II Ethernet (LA-7699) Requires a valid software maintenance for the debug system it is connected to
LA-3942 PI2- LOGICANALYZ ER-4G	PowerIntegrator II Logic Analyzer 4 GByte State-Timing Analyzer, 102 channels, 200 (400) MHz state, 500 MHz timing, transient recording, 256 MFrames, 48-bit time-stamp, trigger, filter, trigger Delay, etc. Requires Power Debug II Ethernet (LA-7699) Requires a valid software maintenance for the debug system it is connected to
LA-3951 PI-SOFTT-NS- DIFF	SoftTouch NS Adapter for PowerIntegrator Soft Touch normal-size Probe for Mictor Probe Differential (LA-7947) includes a retention module and a connector block Agilent -> normal size
LA-3952 PI-SOFTT-NS- DIFF-CA	SoftTouch NS Cable Adapter PowerIntegrator Soft Touch normal-size Probe with cable for Mictor Probe Differential (LA-7947) includes a retention module and a connector block Agilent -> normal size

OrderNo Code	Text
LA-3953 PI-SOFTT-NS	SoftTouch NS Adapter for PowerIntegrator Soft Touch normal-size Probe for Mictor Probe (LA-7944) includes a retention module and a connector block Agilent -> normal size
LA-3954 PI-SOFTT-NS-CA	SoftTouch NS Cable Adapter PowerIntegrator Soft Touch normal-size Probe with cable for Mictor Probe (LA-7944) includes a retention module and a connector block Agilent -> normal size
LA-3955 PI-SOFTT-HS-DIFF	SoftTouch HS Adapter for PowerIntegrator Soft Touch half-size Probe for Mictor Probe Differential (LA-7947) includes a retention module and a connector block Tektronix -> half size
LA-3956 PI-SOFTT-HS-DIFF-CA	SoftTouch HS Cable Adapter PowerIntegrator Soft Touch half-size Probe with cable for Mictor Probe Differential (LA-7947) includes a retention module and a connector block Tektronix -> half size
LA-3957 PI-SOFTT-HS	SoftTouch HS Adapter for PowerIntegrator Soft Touch half-size Probe for Mictor Probe (LA-7944) includes a retention module and a connector block Tektronix -> half size
LA-3958 PI-SOFTT-HS-CA	SoftTouch HS Cable Adapter PowerIntegrator Soft Touch half-size Probe with cable for Mictor Probe (LA-7944) includes a retention module and a connector block Tektronix -> half size
LA-7955 PI-SDRAM144	PowerIntegrator Adapter SODIMM SDRAM Adapter SODIMM SDRAM to MICTOR Requires three Mictor Probes
LA-7956 PI-DDR	PowerIntegrator Adapter SODIMM DDR 400MHz Adapter SODIMM DDR to MICTOR Requires two Mictor Probes plus one Mictor Differential Clock Probe
LA-7957 PI-DDR2	PowerIntegrator Adapter SODIMM DDR2 400MHz Adapter SODIMM DDR to MICTOR Requires two Mictor Probes plus one Mictor Differential Clock Probe
LA-7963 PI-SDRAM144-INVERSE	PowerIntegrator Adapter SODIMM SDRAM Inverse Adapter SODIMM SDRAM to MICTOR (left-hand version) Requires three Mictor Probes
LA-7964 PI-DDR-INVERSE	PowerIntegrator Adapter SODIMM DDR 400MHz Inv Adapter SODIMM DDR to MICTOR (left-hand version) Requires two Mictor Probes plus one Mictor Differential Clock Probe
LA-7965 PI-DDR2-INVERSE	PowerIntegrator Adapt. SODIMM DDR2 400MHz Inv Adapter SODIMM DDR2 to MICTOR (left-hand version) Requires two Mictor Probes plus one Mictor Differential Clock Probe
LA-7945 PI-STDPROBE	Standard Probe for PowerIntegrator Standard Probe for PowerIntegrator, 17 Channels (16 Data, 1 Clock), 0..5 V Input, 4 pF, 50 KOhm includes a 20 pin male-male adaptor

OrderNo Code	Text
LA-7944 PI-MICTOR	Mictor Probe for PowerIntegrator Mictor Probe for PowerIntegrator, 34 Channels (32 Data, 2 Clock), 0..5 V Input, 4 pF, 50 kOhm
LA-7954 PI-MICTOR- DIFFCLOCK	Mictor Probe for PowerIntegrator DIFFCLOCK Mictor Probe for PowerIntegrator, 33 Channels (32 Data, 1 pair of differential clock), 0..5 V Input, 4 pF, 50 kOhm
LA-7947 PI- MICTORDIFF	Mictor Probe for PowerIntegrator DIFFERENTIAL Mictor Probe for PowerIntegrator, 17 Difference Channels (16 Data, 1 Clock), 0..5 V Input, 4 pF, 50 kOhm applicable to PowerIntegrator and PowerTrace II
LA-7946 PI-SAMTEC	Samtec Probe for PowerIntegrator Samtec Probe for PowerIntegrator, 34 Channels (32 Data, 2 Clock), 0..5 V Input, 4 pF, 50 kOhm
LA-7958 PI-SAMTEC- DIFFCLOCK	Samtec Probe for PowerIntegrator DIFFCLOCK Samtec Probe for PowerIntegrator, 33 Channels (32 Data, 1 pair of differential clock), 0..5 V Input, 4 pF, 50 kOhm
LA-7949 PI-ANALOG	Analog Probe for PI/PT-II/CombiProbe/uTrace 4 Channels 0..5 V 12 Bit Resolution, 3 Current Sense Channels, Conversion Rate 625K Samples/Sec applicable to PowerIntegrator, PowerTrace II, CombiProbe and uTrace CombiProbe and uTrace require Converter CombiProbe/uTrace to PI-Analog Probe (LA-4508)
LA-7961 PI-USB2	USB2 Probe for PowerIntegrator For recording of USB1x and USB2 Support for filtering, trigger and display on PID protocol level

OrderNo Code	Text
LA-7966 PI-USB3	USB3 Probe for PowerIntegrator-II For recording of USB3 Super-Speed only Support for filtering and display on raw-, link- and protocol-level Requires PowerIntegrator-II
LA-7943 PI-DIGRF- PROBE-SET	DigRF Probe Set probe set (3 pieces) for 3G/DigRF protocol for the PowerIntegrators (not supported by PowerTraceII analyzer slot) differential RX; differential TX; single ended SysClkEna and single ended ANY (for free use)
LA-7962 PI-34CH- MICTOR	34CH Compression-on-PCB to Mictor Adapter Converter TEKTRONIX footprint to MICTOR connector for PowerIntegrator
LA-7959 PI-ESICON	PowerIntegrator Adapter to ESICON Adaptor for ESI-CON, plugged between target and Eprom-Simulator-Probe Requires 2 Mictor Probes or 3 Standard Probes
LA-7649 CONV-MIC38- 2.54MM	Converter Mictor38 to 2.54 mm Connector Converter from Mictor 38 to 2.54 mm Connector

Detailed Order Information

Order No.	Code	Text
LA-7940	PI- LOGICANALYZ ER	PowerIntegrator Logic Analyzer
LA-3940	PI2- LOGICANALYZ ER-1G	PowerIntegrator II Logic Analyzer 1 GByte
LA-3941	PI2- LOGICANALYZ ER-2G	PowerIntegrator II Logic Analyzer 2 GByte
LA-3942	PI2- LOGICANALYZ ER-4G	PowerIntegrator II Logic Analyzer 4 GByte
LA-3951	PI-SOFTT-NS- DIFF	SoftTouch NS Adapter for PowerIntegrator
LA-3952	PI-SOFTT-NS- DIFF-CA	SoftTouch NS Cable Adapter PowerIntegrator
LA-3953	PI-SOFTT-NS	SoftTouch NS Adapter for PowerIntegrator
LA-3954	PI-SOFTT-NS-CA	SoftTouch NS Cable Adapter PowerIntegrator

Order No.	Code	Text
LA-3955	PI-SOFTT-HS-DIFF	SoftTouch HS Adapter for PowerIntegrator
LA-3956	PI-SOFTT-HS-DIFF-CA	SoftTouch HS Cable Adapter PowerIntegrator
LA-3957	PI-SOFTT-HS	SoftTouch HS Adapter for PowerIntegrator
LA-3958	PI-SOFTT-HS-CA	SoftTouch HS Cable Adapter PowerIntegrator
LA-7955	PI-SDRAM144	PowerIntegrator Adapter SODIMM SDRAM
LA-7956	PI-DDR	PowerIntegrator Adapter SODIMM DDR 400MHz
LA-7957	PI-DDR2	PowerIntegrator Adapter SODIMM DDR2 400MHz
LA-7963	PI-SDRAM144-INVERSE	PowerIntegrator Adapter SODIMM SDRAM Inverse
LA-7964	PI-DDR-INVERSE	PowerIntegrator Adapter SODIMM DDR 400MHz Inv
LA-7965	PI-DDR2-INVERSE	PowerIntegrator Adapt. SODIMM DDR2 400MHz Inv
LA-7945	PI-STDPROBE	Standard Probe for PowerIntegrator
LA-7944	PI-MICTOR	Mictor Probe for PowerIntegrator
LA-7954	PI-MICTOR-DIFFCLOCK	Mictor Probe for PowerIntegrator DIFFCLOCK
LA-7947	PI-MICTORDIFF	Mictor Probe for PowerIntegrator DIFFERENTIAL
LA-7946	PI-SAMTEC	Samtec Probe for PowerIntegrator
LA-7958	PI-SAMTEC-DIFFCLOCK	Samtec Probe for PowerIntegrator DIFFCLOCK
LA-7949	PI-ANALOG	Analog Probe for PI/PT-II/CombiProbe/uTrace
LA-7961	PI-USB2	USB2 Probe for PowerIntegrator
LA-7966	PI-USB3	USB3 Probe for PowerIntegrator-II
LA-7943	PI-DIGRF-PROBE-SET	DigRF Probe Set
LA-7962	PI-34CH-MICTOR	34CH Compression-on-PCB to Mictor Adapter
LA-7959	PI-ESICON	PowerIntegrator Adapter to ESICON
LA-7649	CONV-MIC38-2.54MM	Converter Mictor38 to 2.54 mm Connector
Additional Options		
LA-6470	CLIPSET	Clip Set (Cable and Clips)

Contact

International Representative

Argentina

Anacom Eletronica Ltda.
Mr. Rafael Sorice
Rua Nazareth, 807, Barcelona
BR-09551-200 São Caetano do Sul, SP
Phone: +55 11 3422 4200
FAX: +55 11 3422 4242
EMAIL: rsorice@anacom.com.br

Australia

Embedded Logic Solutions P/L
Mr. Ramzi Kaffan
Suite 2, Level 3
144 Marsden Street
Parramatta NSW 2150
Phone: +61 2 9687 1880
FAX: +61 2 9687 1881
EMAIL: sales@emlogic.com.au

Austria

Lauterbach GmbH
Altlaufstr. 40
D-85635 Höhenkirchen-Siegertsbrunn
Phone: +49 8102 9876 0
FAX: +49 8102 9876 999
EMAIL: info@lauterbach.com

Belgium

Tritec Benelux B.V.
Mr. Robbert de Voogt
Stationspark 550
NL-3364 DA Slidrecht
Phone: +31 184 41 41 31
FAX: +31 184 42 36 11
EMAIL: software@tritec.nl

Brazil

Anacom Eletronica Ltda.
Mr. Rafael Sorice
Rua Nazareth, 807, Barcelona
BR-09551-200 São Caetano do Sul, SP
Phone: +55 11 3422 4200
FAX: +55 11 3422 4242
EMAIL: rsorice@anacom.com.br

Canada

Lauterbach Inc.
Mr. Udo Zoettler
4 Mount Royal Ave.
USA-Marlborough, MA 01752
Phone: +1 508 303 6812
FAX: +1 508 303 6813
EMAIL: info_us@lauterbach.com

China Beijing

Lauterbach Technologies Co., Ltd
Mr. Linglin He
Beijing Office
A3, South Lishi Road, XiCheng District
Beijing 100037, P.R. China
Phone: +86 10 68023502
FAX: +86 10 68023523
EMAIL: linglin.he@lauterbach.com

China Shenzhen

Lauterbach Technologies Co., Ltd
1406/E Xihaimingzhu Building
No.1 Taoyuan Road, Nanshan District
Shenzhen 518052, P.R. China
Phone: +86 755 8621 0671
FAX: +86 755 8621 0675
EMAIL: emily.zhang@lauterbach.com

China Suzhou

Lauterbach Technologies Co., Ltd
Mr. Linglin He
Hengyu Square, Rm 709
No. 188, Xing Hai Street
Suzhou, 215021 P.R. of China
Phone: +86 512 6265 8030
FAX: +86 512 6265 8032
EMAIL: info_cn@lauterbach.com

Czech Republic

Lauterbach GmbH
Altlaufstr. 40
D-85635 Höhenkirchen-Siegertsbrunn
Phone: +49 8102 9876 0
FAX: +49 8102 9876 999
EMAIL: info@lauterbach.com

Denmark

Nohau Danmark A/S
Mr. Flemming Jensen
Klausdalsbrovej 493
DK-2730 Herlev
Phone: +45 44 52 16 50
FAX: +45 44 52 26 55
EMAIL: info@nohau.dk

Egypt

Wantech Egypt
Mr. Wagih A. Nawara
5 Shafik Ghalie St., Suite 2
Off Pyramids Road, Giza
Cairo 12111
Phone: +20 100 1251955
FAX: +20 100 1250349
EMAIL: sales@wantech.net.com

Finland

Nohau Solutions Finland
Mr. Martti Viljainen
Teknobulevardi 3-5
FI-01531 Vantaa
Phone: +358 40 546 1469
FAX: +358 9 2517 8101
EMAIL: sales@nohau.fi

France

Lauterbach S.A.R.L.
Mr. Jean-Pierre Paradiso
Europarc - Le Hameau B
135 Chemin Des Bassins
F-94035 Créteil Cedex
Phone: +33 1 49 56 20 30
FAX: +33 1 49 56 20 39
EMAIL: info_fr@lauterbach.com

Germany

Lauterbach GmbH
Altlaufstr. 40
D-85635 Höhenkirchen-Siegertsbrunn
Phone: +49 8102 9876 0
FAX: +49 8102 9876 999
EMAIL: info@lauterbach.com

Germany North

Lauterbach GmbH
Mr. Klaus Hommann
Leonhardring 5
D-31319 Sehnde
Phone: +49 8102 9876 174
FAX: +49 5138 6185 3
EMAIL: klaus.hommann@lauterbach.com

Germany South

Lauterbach GmbH
 Andreas Grimm
 Altlaufstr. 40
 D-85635 Höhenkirchen-Siegersbrunn
 Phone: +49 8102 9876 190
 FAX: +49 8102 9876 187
 EMAIL: andreas.grimm@lauterbach.com

Greece

Lauterbach GmbH
 Altlaufstr. 40
 D-85635 Höhenkirchen-Siegersbrunn
 Phone: +49 8102 9876 0
 FAX: +49 8102 9876 999
 EMAIL: info@lauterbach.com

Hungary

Lauterbach GmbH
 Altlaufstr. 40
 D-85635 Höhenkirchen-Siegersbrunn
 Phone: +49 8102 9876 0
 FAX: +49 8102 9876 999
 EMAIL: info@lauterbach.com

India-Bangalore

Electro Systems Associates Pvt. Ltd.
 Mr. G. V. Gurunatham
 S-606, World Trade Center
 Malleswaram West, No.26/1, Dr. Rajkumar
 Road
 India - Bangalore 560055
 Phone: +91 80 67648888
 FAX: +91 80 23475615
 EMAIL: Trace32sales@esaindia.com

India-Chennai

Electro Systems Associates Pvt. Ltd.
 Mr. D. Kannan
 No.109/59A, Ground Floor
 IV Avenue, Ashok Nagar
 India - Chennai - 600 083 Tamilnadu
 Phone: +91 044-24715750
 FAX: +91 44 24715750
 EMAIL: chennai@esaindia.com

India-Delhi

Electro Systems Associates Pvt. Ltd.
 Mr. R.K. Bhandari
 No. 705, 7th Floor, Laxmi Deep
 Shivajinagar
 India - Delhi - 110 092
 Phone: +91 11-22549351
 FAX:
 EMAIL: delhi@esaindia.com

India-Hyderabad

Electro Systems Associates Pvt. Ltd.
 Mr. C.V.M. Sri Ram Murthy
 Shop No. 14, "Global Enclave"
 Bhagyanagar Colony, Kukat pally
 India - Hyderabad 500 072
 Phone: +91 40-23063346
 FAX: +91 40-23063346
 EMAIL: hyderabad@esaindia.com

India-Pune

Electro Systems Associates Pvt. Ltd.
 Mr. R K Bhandari
 Shriram Complex, 1126/1, Model Colony
 Shivajinagar
 India - Pune - 411 016
 Phone: +91 20 - 30462035 / 25663
 FAX: +91 20-25677202
 EMAIL: pune@esaindia.com

Ireland

Lauterbach Ltd.
 Mr. Barry Lock
 11 Basepoint Enterprise Centre
 Stroudley Road
 Basingstoke, Hants RG24 8UP
 Phone: +44-1256-333-690
 FAX: +44-1256-336-661
 EMAIL: info_uk@lauterbach.com

Israel

Itec Ltd.
 Mr. Mauri Gottlieb
 P.O. Box 10002
 IL-Tel Aviv 61100
 Phone: +972 3 6491202
 FAX: +972 3 6497661
 EMAIL: general@itec.co.il

Italy

Lauterbach Srl
 Mr. Maurizio Menegotto
 Via Enzo Ferrieri 12
 I-20153 Milano
 Phone: +39 02 45490282
 FAX: +39 02 45490428
 EMAIL: info_it@lauterbach.com

Japan

Lauterbach Japan, Ltd.
 Mr. Kenji Furukawa
 3-8-8 Shinyokohama
 Kouhoku-ku, Nisso 16th Building
 Yokohama-shi, Japan 222-0033
 Phone: +81 45 477 4511
 FAX: +81 45 477 4519
 EMAIL: info@lauterbach.co.jp

Luxembourg

Tritec Benelux B.V.
 Mr. Robbert de Voogt
 Stationspark 550
 NL-3364 DA Sliedrecht
 Phone: +31 184 41 41 31
 FAX: +31 184 42 36 11
 EMAIL: software@tritec.nl

Malaysia

Flash Technology
 Mr. Teo Kian Hock
 No 61, # 04-15 Kaki Bukit Av 1
 Shun Li Industrial Park
 SGP-Singapore 417943
 Phone: +65 6749 6168
 FAX: +65 6749 6138
 EMAIL: teokh@flashtech.com.sg

Mexico

Lauterbach Inc.
 Mr. Udo Zoettler
 4 Mount Royal Ave.
 USA-Marlborough, MA 01752
 Phone: +1 508 303 6812
 FAX: +1 508 303 6813
 EMAIL: info_us@lauterbach.com

Netherlands

Tritec Benelux B.V.
 Mr. Robbert de Voogt
 Stationspark 550
 NL-3364 DA Sliedrecht
 Phone: +31 184 41 41 31
 FAX: +31 184 42 36 11
 EMAIL: software@tritec.nl

New Zealand

Embedded Logic Solutions P/L
 Mr. Ramzi Kattan
 Suite 2, Level 3
 144 Marsden Street
 Parramatta NSW 2150
 Phone: +61 2 9687 1880
 FAX: +61 2 9687 1881
 EMAIL: sales@emlogic.com.au

Norway

Nohau Solutions AB
 Mr. Jörgen Nilsson
 Derbyvägen 4
 SE-21235 Malmö
 Phone: +46 40 592 206
 FAX: +46 40 592 229
 EMAIL: sales@nohau.se

Poland

QUANTUM Sp. z o.o.
 Mr. Aleksander Bil
 ul. Jeleniogorska 6
 54-056 Wrocław
 Phone: +48 71 362 6356
 FAX: +48 71 362 6357
 EMAIL: info@quantum.com.pl

Portugal

Captura Electronica, SCCL
Mr. Juan Martinez
c/Duero, 40
E-08031 Barcelona
Phone: +34 93 429 5730
FAX: +34 93 407 0778
EMAIL: info@captura-el.com

Romania

Lauterbach GmbH
Altlaufstr. 40
D-85635 Höhenkirchen-Siegersbrunn
Phone: +49 8102 9876 0
FAX: +49 8102 9876 999
EMAIL: info@lauterbach.com

Russia

RTSoft
Mr. Alexey Isaev
Nikitinskaya 3
RUS-105037 Moscow
Phone: +7 495 742 6828
FAX: +7 495 742 6829
EMAIL: sales@rtsoft.msk.ru

Singapore

Flash Technology
Mr. Teo Kian Hock
No 61, # 04-15 Kaki Bukit Av 1
Shun Li Industrial Park
SGP-Singapore 417943
Phone: +65 6749 6168
FAX: +65 6749 6138
EMAIL: teokh@flashtech.com.sg

South Korea, Pangyo

MDS Technology Co., Ltd.
Mr. Sangheon Lee
3FL, Hancom Tower
49, Daewangpangyo-ro 644, Bundang-gu
Seongnam-si, Gyeonggi-do, 463-400, ROK
Phone: +82-31-627-3000
FAX: +82-31-627-3100
EMAIL: trace32@mdstec.com

Spain

Captura Electronica, SCCL
Mr. Juan Martinez
c/Duero, 40
E-08031 Barcelona
Phone: +34 93 429 5730
FAX: +34 93 407 0778
EMAIL: info@captura-el.com

Sweden

Nohau Solutions AB
Mr. Jörgen Nilsson
Derbyvägen 4
SE-21235 Malmö
Phone: +46 40 592 206
FAX: +46 40 592 229
EMAIL: sales@nohau.se

Switzerland

JDT Jberg DatenTechnik
Mr. Andreas Jberg
Zimmereistrasse 2
CH-5734 Reinach AG
Phone: +41 62 7710 886
FAX:
EMAIL: Andreas.Jberg@jdt.ch

Taiwan

Superlink Technology Corp.
Mr. Sulin Huang
3F-8, No. 77, Sec. 1, Xintaiwu Rd., Xizhi District,
New Taipei City 22101, Taiwan, R.O.C.
Phone: +886 2 26983456
FAX: +886 2 26983535
EMAIL: info.stc@superlink.com.tw

Tunisia

Lauterbach Consulting S.A.R.L.
Mr. Khaled Jmal
Route El Ain Km 3.5
TN-3062 Sfax
Phone: +216-74611730
FAX: +216-74611723
EMAIL: info_tn@lauterbach.com

Turkey-1

Tektronik Muh. ve Tic. A.S.
Mr. Hakan Yavuz
CyberPlaza B-Blok, 702B
Bilkent
06800 Ankara
Phone: +90 312 437 3000
FAX: +90 312 437 1616
EMAIL: info@tektronik.com.tr

Turkey-2

G3TEK Embedded Technologies Ltd.
Mr. Celal Aygun
Ilkyerlesim Mah. 445.
Sok. No: 48
06370 Batikent/Ankara
Phone: +90 312 3324769
FAX: +90 312 3324769
EMAIL: info@g3tek.com

UK

Lauterbach Ltd.
Mr. Barry Lock
11 Basepoint Enterprise Centre
Stroudley Rd
Basingstoke, Hants RG24 8UP
Phone: +44 1256 333 690
FAX: +44 1256 350 301
EMAIL: info_uk@lauterbach.com

USA East

Lauterbach Inc.
Mr. Udo Zoettler
4 Mount Royal Ave.
USA-Marlborough, MA 01752
Phone: +1 508 303 6812
FAX: +1 508 303 6813
EMAIL: info_us@lauterbach.com

USA West

Lauterbach Inc.
Mr. Bob Kupyn
1111 Main Street, Suite 620
USA-Vancouver, WA, 98660
Phone: +1 503 524 2222
FAX: +1 503 524 2223
EMAIL: bob.kupyn@lauterbach.com

Additional Information

<http://www.lauterbach.com>

Lauterbach GmbH

Altlaufstr. 40
D-85635 Höhenkirchen-Siegertsbrunn
Tel. ++49 8102 9876-0 FAX -999
info@lauterbach.com
http://www.lauterbach.de

Lauterbach Inc.

4 Mount Royal Ave.
Marlboro MA 01752
Phone (508) 303 6812 FAX (508) 303 6813
info_us@lauterbach.com
http://www.us.lauterbach.com

Lauterbach Ltd.

11 Basepoint Enterprise Ctre Stroudley Road
Basingstoke, Hants RG24 8UP
Phone ++44-1256-333-690 FAX -661
info_uk@lauterbach.com
http://www.lauterbach.co.uk

Lauterbach S.A.R.L.

135 Chemin Des Bassins
F-94035 Créteil Cedex
Phone ++33-149-562-030
FAX ++33-149-562-039
info_fr@lauterbach.com
http://www.lauterbach.fr

Lauterbach Japan, Ltd.

3-9-5 Shinyokohama Kouhoku-ku
Yokohama-shi Japan 222-0033
Phone ++81-45-477-4511 FAX -4519
info_j@lauterbach.com
http://www.lauterbach.co.jp

Lauterbach s.r.l.

Lauterbach s.r.l.
Via Enzo Ferrieri 12
I-20153 Milano
Phone ++39 02 45490282
FAX ++39 02 45490428
info_it@lauterbach.it
http://www.lauterbach.it

Suzhou Lauterbach Consulting Co.,Ltd.

Room 1605, Xing Hai International Square
No.200, Xing Hai Street
Suzhou, 215021 PR of China
Phone: 0086-512 6265 8030
FAX: 0086-512 6265 8032
info_cn@lauterbach.cn
http://www.lauterbach.cn

Disclaimer

The information presented is intended to give overview information only. Changes and technical enhancements or modifications can be made without notice.